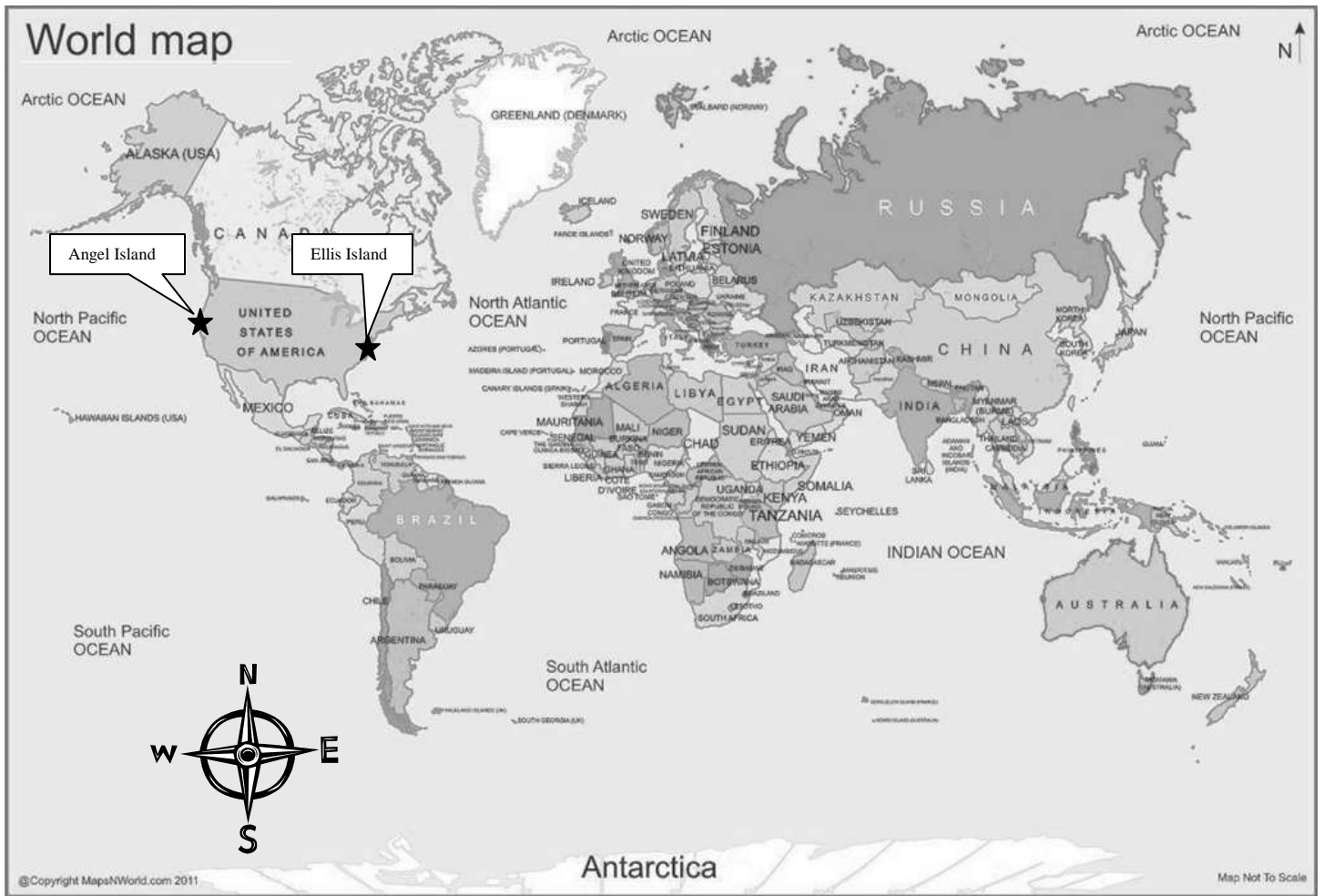
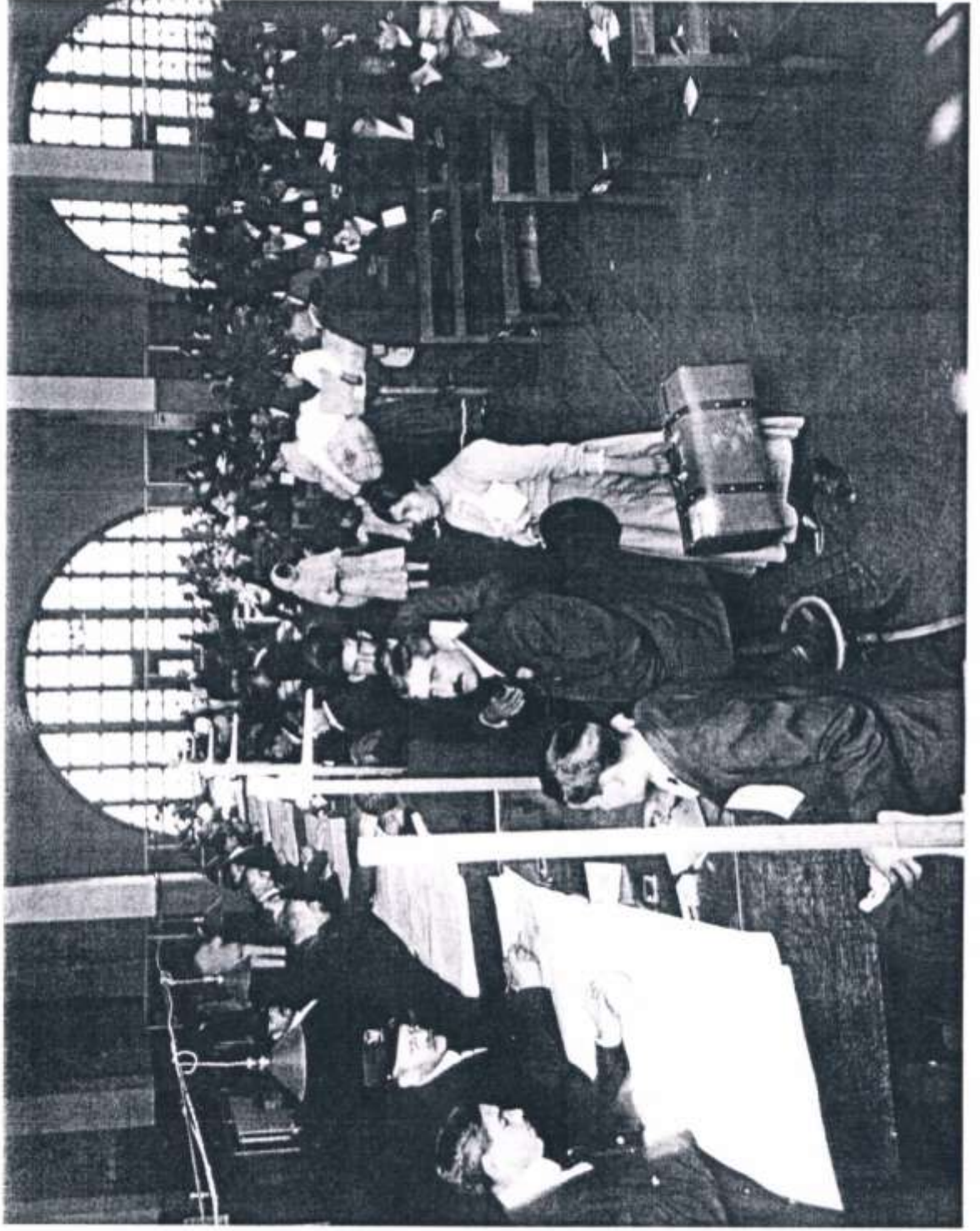


NAME: _____

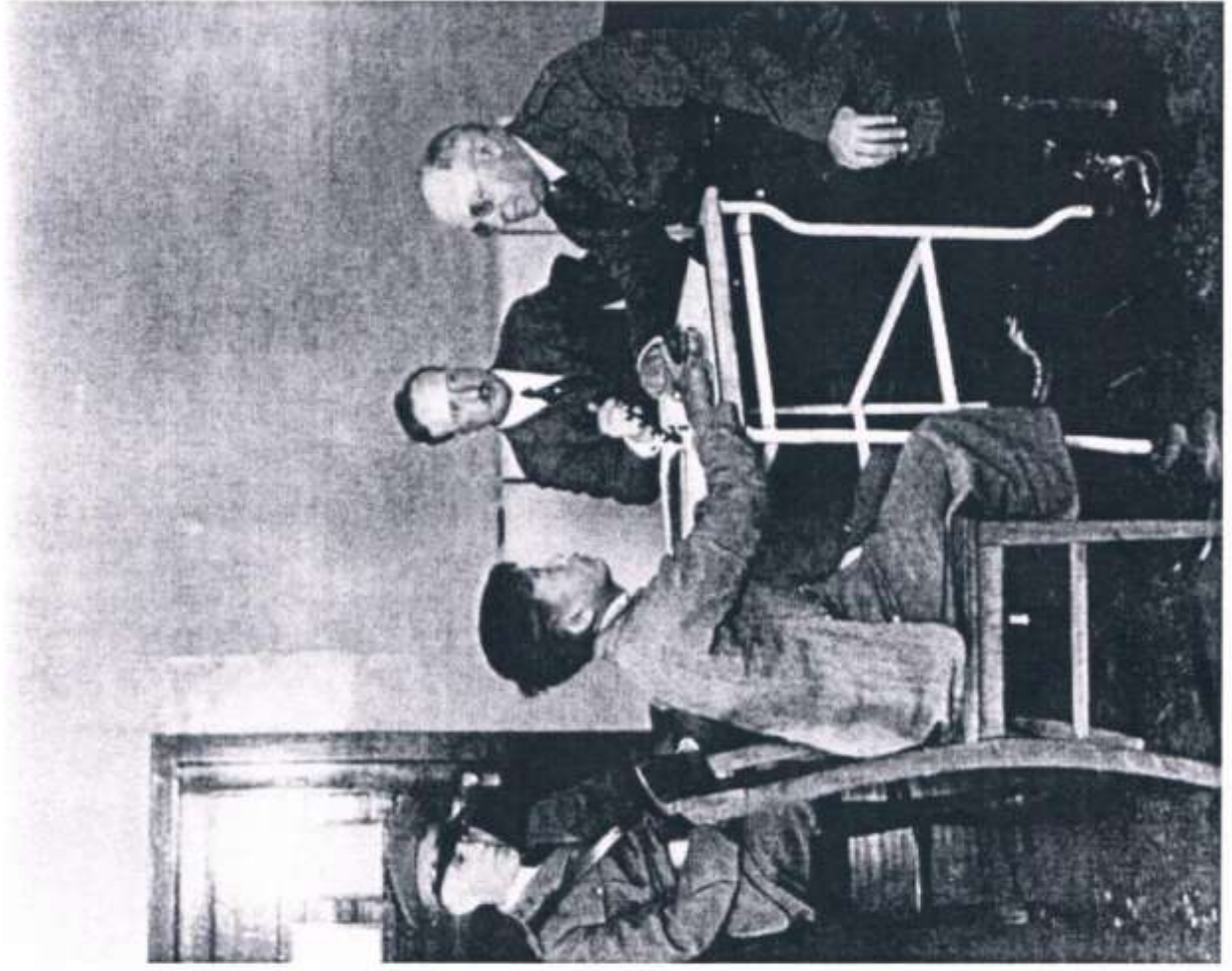


1. Which immigration center is on the east coast of the United States?
2. Which immigration center is on the west coast of the United States?
3. If you were coming to the United States from Ireland, which immigration center would you enter through?
4. If you were coming to the United States from China, which immigration center would you enter through?

Document A
Ellis Island



document 10
Angel Island



Comparing and Contrasting Ellis Island and Angel Island

1. Examine the Pictures. Describe a typical day for an immigrant trying to gain access to America through one of the United States immigration ports?

2. Based on the images, how is the interview process of these two ports similar? How are they different?

3. Imagine that you are the person conducting the interview... You must ask each immigrant questions to determine if they should be allowed into the United States. It is your responsibility to ensure that people entering the country will not become a burden on the nation. Write a script that an immigrations officer interviewing an immigrant who just arrived into either Ellis or Angel Island. Use the “Who, What, When, Where, Why, and How” sheet to write your script. Write 4 questions for the immigrations officers to ask.

Who, What, When, Where, Why, and How

Who
What
Where
Why
When
How