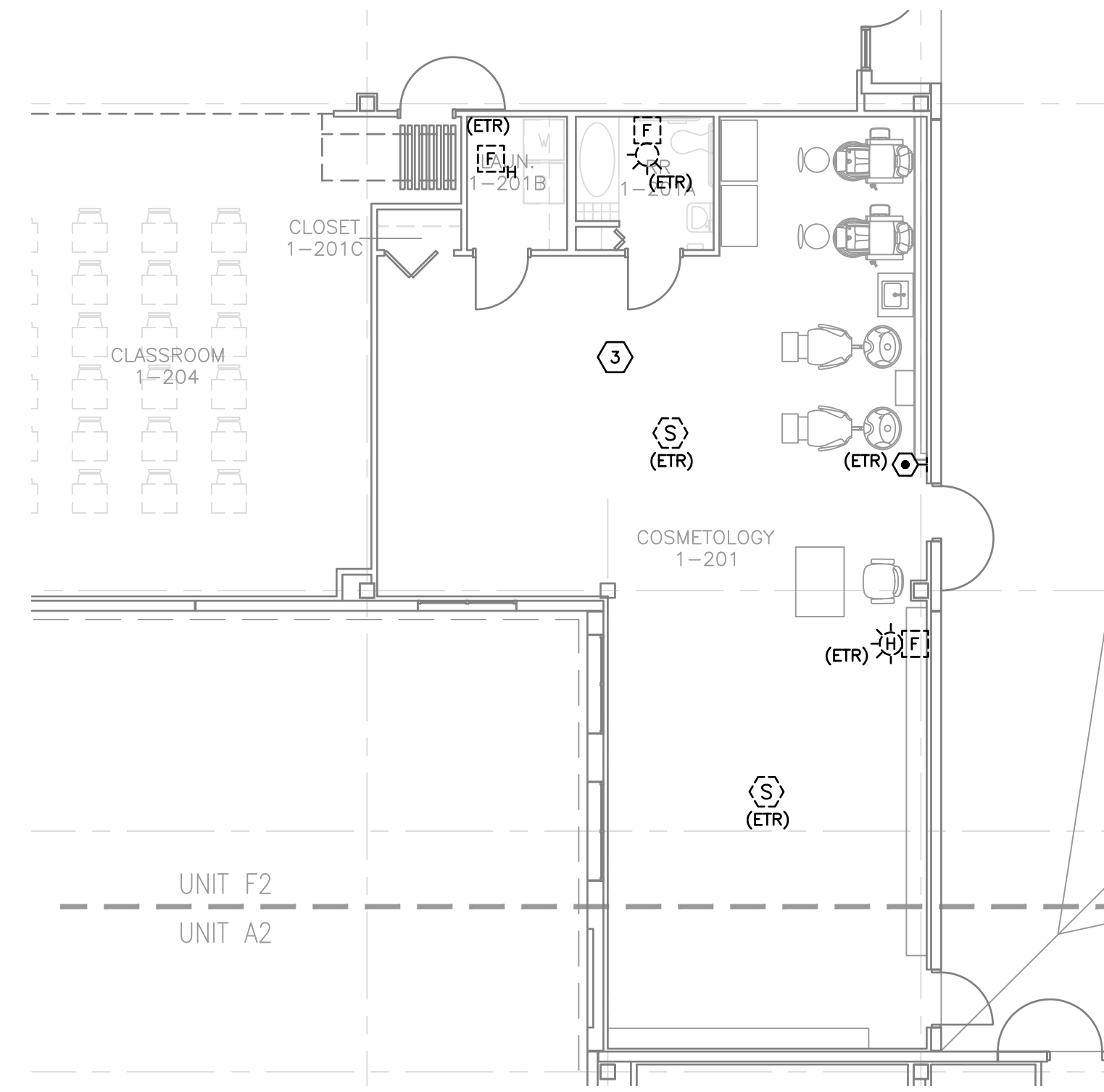


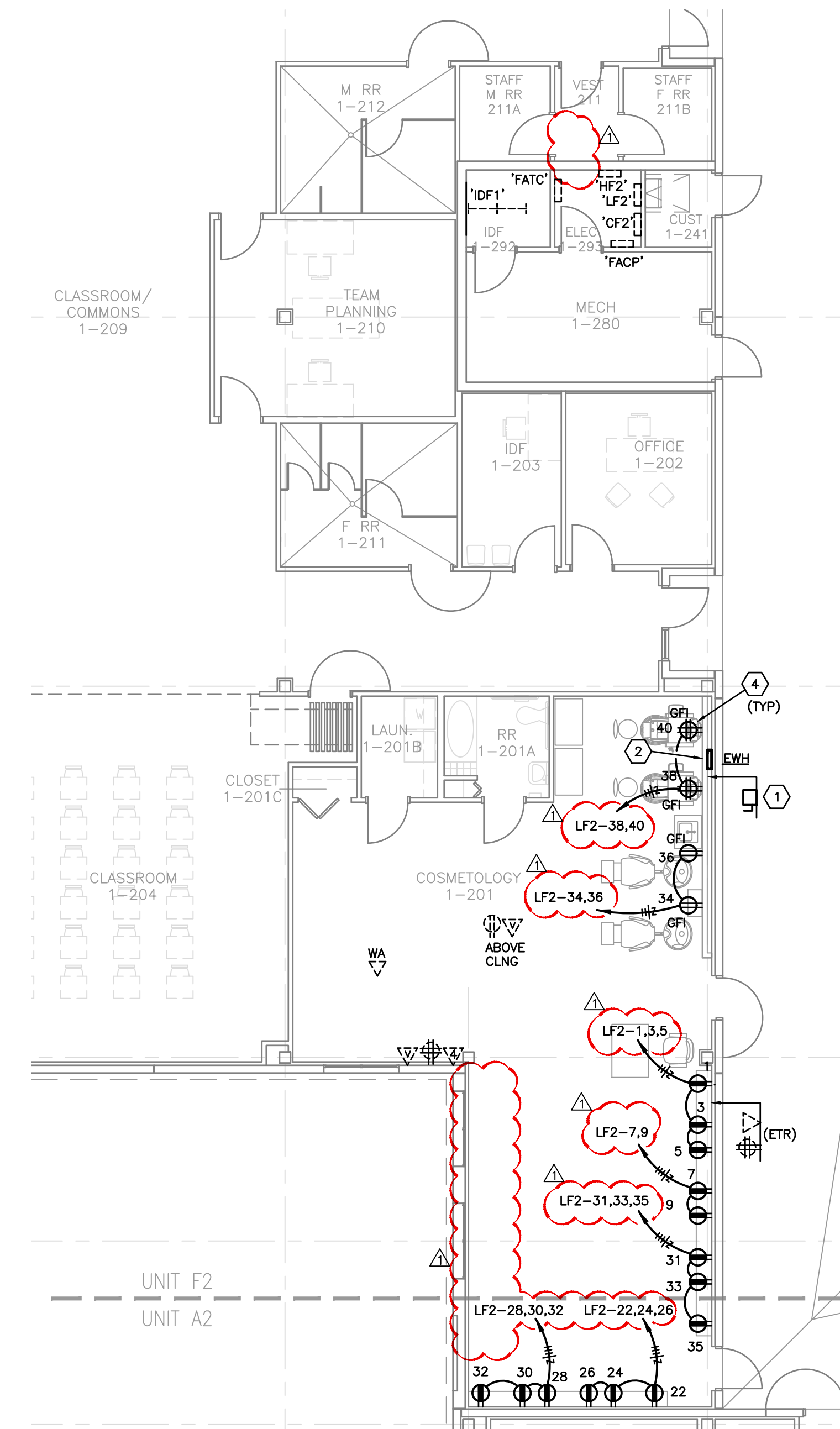
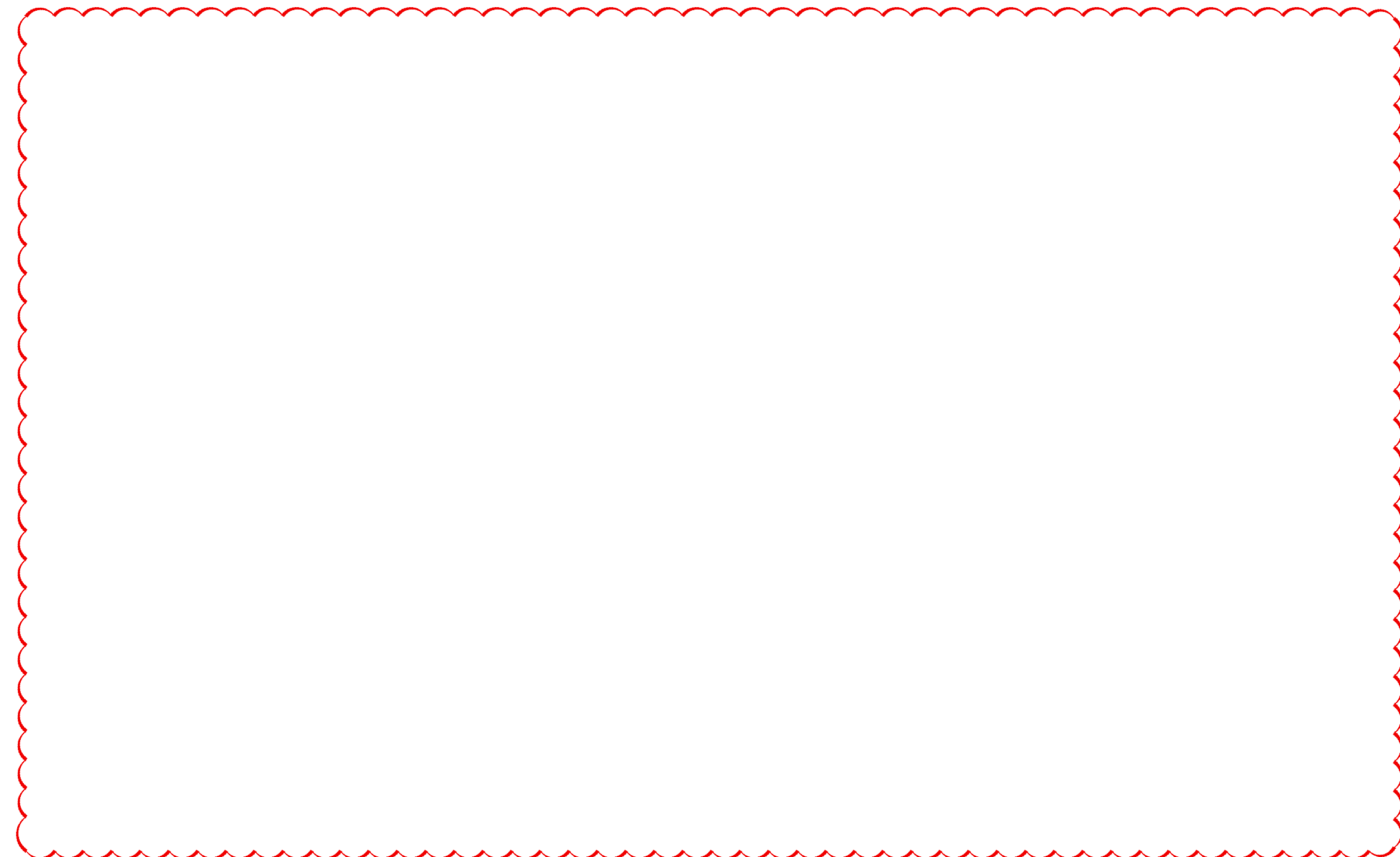
MECHANICAL EQUIPMENT CONNECTION SCHEDULE															
MARK	ROOM NUMBER	VOLTAGE/PHASE	KW	HP	FLA	MCA	BREAKER	HOMERUN CIRCUIT	CONDUIT & CABLING	COMBINATION STARTER/DISCONNECT SWITCH					INTERLOCK/REMARKS
										SIZE AMPS	POLES	FUSE	STARTER SIZE	NEMA RATING	
TANKLESS POINT OF USE ELECTRIC WATER HEATER															
EWH	COSMETOLOGY	480/3	20.0	-	24.0	30.0	30	HF2-32,34,36	1" C; 3-#10, 1-#10 GND.	30	3	NF	-	1	HEAVY DUTY TYPE

MFS = MANUFACTURER'S RECOMMENDED FUSE SIZE
MRS = MOTOR RATED TOGGLE SWITCH BY DIVISION 26
VFD = VARIABLE FREQUENCY DRIVE (BY DIVISION 23) INSTALLED BY DIVISION 26

NF = NON-FUSED
DIV23 = DISCONNECTING MEANS PROVIDED BY THE MANUFACTURER OR DIVISION 23 CONTRACTOR



FIRE ALARM AND INTERCOM SYSTEMS PLAN – UNIT F2
SCALE: 1/8"=1'-0"



POWER AND SYSTEMS PLAN – UNIT F2
SCALE: 1/8"=1'-0"

DRAWING NOTES:

- MOUNT DISCONNECT FOR TANKLESS WATER HEATER ABOVE CEILING DIRECTLY ABOVE EWH.
- PROVIDE SIGNAGE THAT STATES 'DISCONNECT FOR WATER HEATER LOCATED ABOVE CEILING'.
- PROTECT ALL EXISTING LOW VOLTAGE SYSTEMS THAT ARE TO REMAIN AND MAINTAIN OPERATION.
- ALL RECEPTACLES SHALL BE 120 VOLT, 20 AMP RATED TYPE (NO 15 AMP), TYPICAL.

REVISIONS	DATE
REVISION	05/09/22

Coral Shores High School
Cosmetology Alterations

Monroe County School District
241 Trumbo Road - Key West, Florida 33040

ELECTRICAL PLAN – UNIT B2

Anston-Greenlees, Inc.
Mechanical & Electrical Consulting Engineers
1115 West Hickory Avenue, Tampa, FL 33612 (813) 966-9199
www.anston-greenlees.com Florida Engineering License Number 8093

AGI

DRAWN	TRG
CHECKED	RCA
DATE	04.18.2022
SCALE	AS NOTED
JOB NO.	21027
DRAWING NO.	E2.1

ROBERT C. ANSTON, P.E. 40858
TO THE BEST OF MY KNOWLEDGE, THESE
DRAWINGS AND THE PROJECT MANUAL ARE
COMPLETE AND COMPLY WITH THE 2020 FLORIDA
BUILDING CODE