



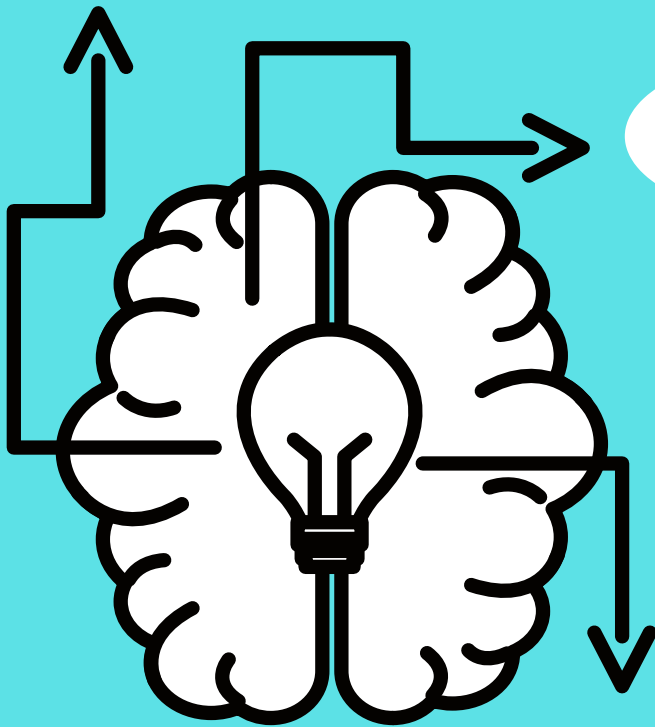
# Parent Resource

## Accessing Emotional and Mental Health Supports

**I am concerned about my child's emotional or mental health.**

Is it an emergency?

Is your child in danger of hurting him/herself or others?



**Yes**

If your child is in immediate danger, please call **911**.

**Mobile Response Team**

305-434-7660 option 8

Mobile Response Teams are available 24 hours a day, 7 days a week. They will assist in a crisis and work with you to stabilize the situation.

**No**

If your child **currently** sees a therapist, contact that therapist for support. The Guidance Care Center can be reached by calling 305-434-7660.

If your child **does not have** a therapist and you would like a referral or to discuss support options please call or email your child's school counselor or school social worker. If you are unsure who that is you can contact the school directly or go to [www.keysschools.com](http://www.keysschools.com) and click on "resources" and then "student support" to find a directory.

**Monroe County School District**