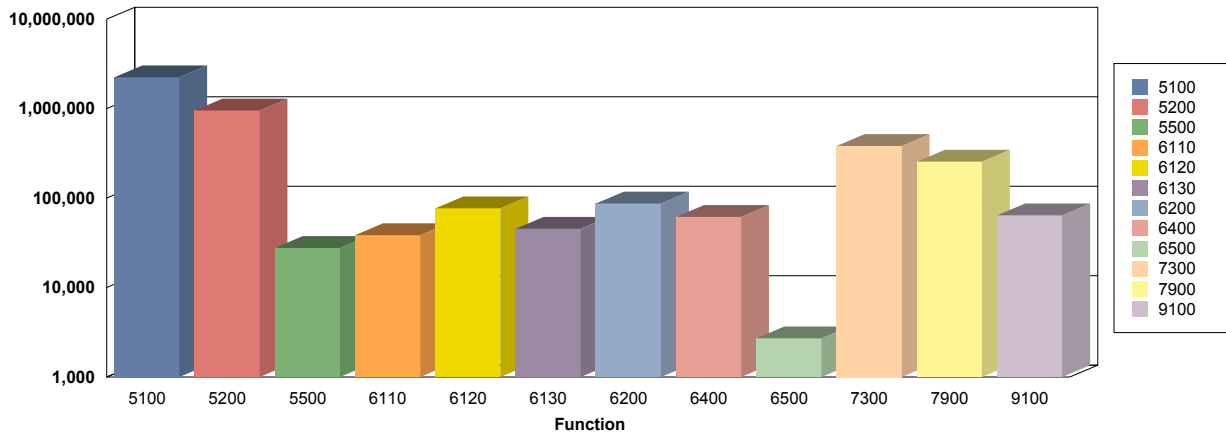




Sugarloaf School

2015 - 2016 General Operations Budget



General Fund Budget	Total
<i>5100-BASIC K-12 INSTRUCTION</i>	2,247,061.52
<i>5200-EXCEPTIONAL INSTRUCTION</i>	953,623.59
<i>5500-PRE-KINDERGARTEN</i>	27,728.34
<i>6110-ATTENDANCE &SOC. WORK PUPIL</i>	38,628.43
<i>6120-GUIDANCE SERVICES</i>	76,710.32
<i>6130-HEALTH SERVICES</i>	45,354.60
<i>6200-INSTUCTIONAL MEDIA SERVICES</i>	87,131.24
<i>6400-INSTRUCTIONAL STAFF TRAINING</i>	61,854.71
<i>6500-INSTRUCTION RELATED TECHNOLOGY</i>	2,707.56
<i>7300-SCHOOL ADMINISTRATION</i>	383,593.68
<i>7900-OPERATION OF PLANT</i>	256,500.00
<i>9100-COMMUNITY SERVICES</i>	64,058.02
Total	4,244,952.01