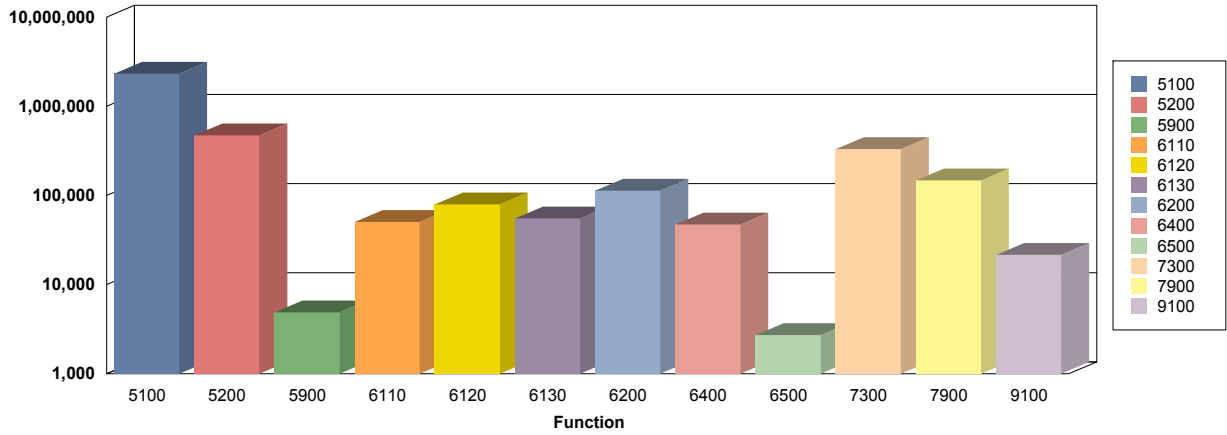




Plantation Key School

2015 - 2016 General Operations Budget



General Fund Budget	Total
<i>5100-BASIC K-12 INSTRUCTION</i>	2,333,431.91
<i>5200-EXCEPTIONAL INSTRUCTION</i>	473,064.11
<i>5900-OTHER INSTRUCTION</i>	4,891.27
<i>6110-ATTENDANCE &SOC. WORK PUPIL</i>	50,568.52
<i>6120-GUIDANCE SERVICES</i>	79,484.08
<i>6130-HEALTH SERVICES</i>	55,058.65
<i>6200-INSTUCTIONAL MEDIA SERVICES</i>	113,171.93
<i>6400-INSTRUCTIONAL STAFF TRAINING</i>	46,999.60
<i>6500-INSTRUCTION RELATED TECHNOLOGY</i>	2,707.56
<i>7300-SCHOOL ADMINISTRATION</i>	330,624.20
<i>7900-OPERATION OF PLANT</i>	147,300.00
<i>9100-COMMUNITY SERVICES</i>	21,613.99
Total	3,658,915.82